



INSTALLATION INSTRUCTIONS

PART#: SMX-GM915R

FITS: 2021 + GM SUV with Standard & MagRide

Thank you for choosing SuspensionMaxx for your vehicle. This kit is designed to add suspension travel and increase front and ground clearance. Specially designed tools and experience are required to complete the installation properly. These parts should only be installed by a qualified mechanic otherwise an unsafe vehicle and/or injury may result. Consult manufactures service manual for proper torque specifications and procedures. Instructions are supplied for the leveling kit installation only. Safety is important. Use safe working habits.

WARNING!

*This suspension system will enhance off road performance and increase ground clearance. **Larger tires will increase vehicle roll center height.** The vehicle will handle and respond to driver steering and braking differently from a stock factory equipped passenger car or truck. Extreme care must be used to prevent loss of control or vehicle rollover during abrupt maneuvers both on and off-road. Failure to operate this vehicle safely can result in vehicle damage, serious injury or death to the driver and passengers. **Always wear your seat belt and reduce your speed, avoid sharp turns, inclines and abrupt maneuvers.** Tread lightly, respect nature and enjoy the Off-Road Experience! Help keep it available for future generations.*

Thank You!
SuspensionMAXX Inc.

INSTRUCTIONS

SuspensionMAXX kits are designed to be easily installed and completely reversible to the factory supplied settings. These instructions are supplied for ease of installation, correct procedures and safety. Automotive experience recommended.

REQUIRED TOOLS

- Load-rated floor jack
- Safety stands x2
- Wheel Chocks
- Metric tool set
- Torque Wrench
- Loctite threadlocker for all fasteners

Again, Thank you for your purchase! Enjoy your SuspensionMAXX leveling system!

Questions? E-mail us at tech@suspensionmaxx.com or call 1.888.629.9226

SECTION 1: Removal

1. Jack and support front of vehicle under frame with load rated jack stands. (Allow the suspension to relax fully by supporting the frame)

2. Installation will be performed on both left and right sides together.

3. Disconnect ABS wires and brake lines from the Upper control arms and knuckles.

(Fig 1-2 & 1-3)

4. Disconnect sway bar from each side.

5. Mark lower strut location that faces outward.

6. Remove 2 lower strut mounting bolts with a 15mm socket. (Fig 1-1)

7. Remove 2 lower strut clip nuts with flat head screw driver or small pry bar.

NOTICE: Repeat procedure on both sides of the vehicle before continuing.

8. Unbolt and disconnect Tie-rod from knuckle.

(Fig 1-3)

9. Disconnect upper ball joint (Fig 1-4)

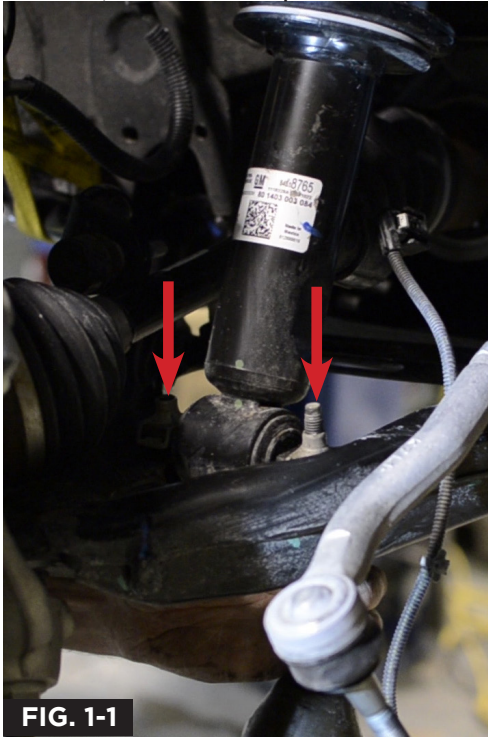


FIG. 1-1

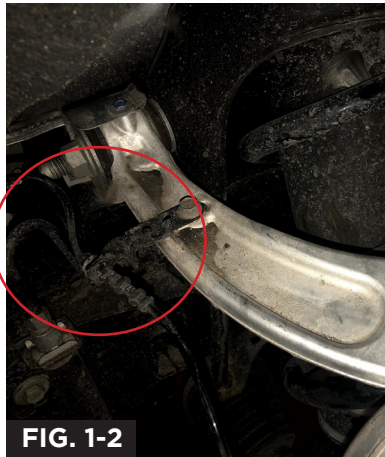


FIG. 1-2



FIG. 1-3

10. Suspend steering knuckle to the vehicle frame to prevent strain on hardware. (Fig 1-5)

11. View upper strut frame tower.

NOTICE: Wire loom attachment clip locations. Pry closely upward on plastic retainers to free from mounting stud threads.

12. Use an 18mm wrench to remove 3 tall tower nuts in triangle arrangement. **DO NOT REMOVE CENTER STRUT PISTON SHAFT NUT!**

13. Slide lower strut inward off of lower control arm.

14. Hold strut and pry down on sway bar with pry bar which will lower the control arm allowing for removal of the strut. Gently lower strut assembly downward 1 to 2 inches. Guide strut assembly up and in between the upper A-Arm. Be sure to clear inner CV boot.

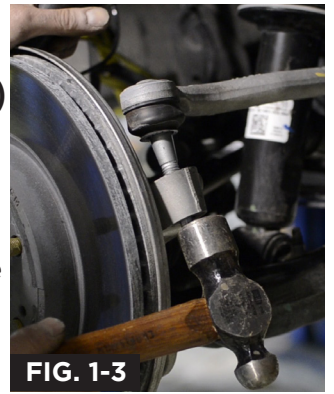


FIG. 1-3

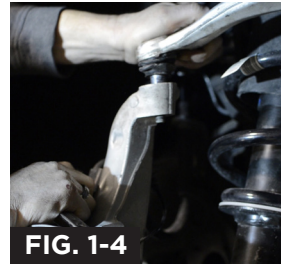


FIG. 1-4

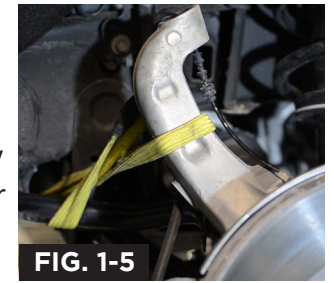


FIG. 1-5

ADAPTIVE-RIDE | Part#: SMX-925M ONLY

1. Verify if your vehicle has the ARC (Adaptive Ride Control) option. **NOTICE: If your vehicle does not include this option continue to onto the next step in "Removal".**
2. Temporarily disconnect linkage from upper control arm bracket with 10mm open-end wrench. (Fig 0-1)
3. Carefully disconnect strut wire harness on front of strut tower. (Fig 0-2 & 0-3)
4. Clip zip tie holding the ARC cable to the vehicle frame.



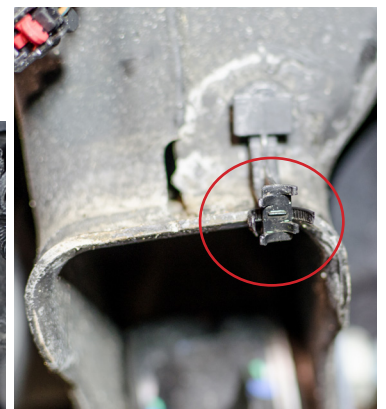
FIG. 0-1



FIG. 0-2





FIG. 0-3



Again, Thank you for your purchase! Enjoy your SuspensionMAXX leveling system!

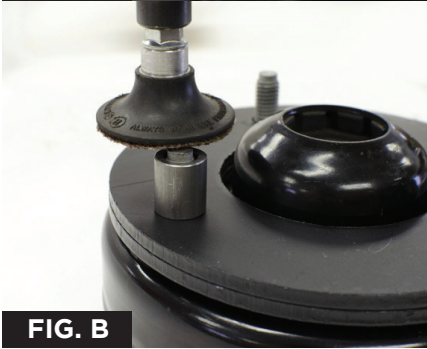
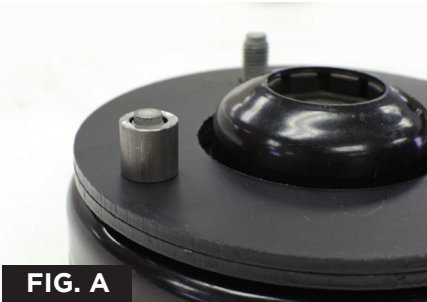
Questions? E-mail us at tech@suspensionmaxx.com or call 1.888.629.9226

LIFT OPTION HEIGHT CHART		
INCLUDED PARTS	LIFT INCHES	PARTS NEEDED
 STRUT MOUNT EXTENDER	1.75"	

1.75" Lift Options

*Spacer Thickness is not directly proportional to lift height. Spacer thickness is less than overall lift amount height.

- 1.
2. **FIG. A & FIG. B**
Place trim guide tube over studs to gauge cut height. Trim all three studs flush with top of gauge.
3. **FIG. A & FIG. B**
Install coupling nuts onto existing strut studs that have been trimmed.
4. **FIG. C**
Tighten coupling nuts with 3/4" wrench 10 ft/ lbs



5. Use thread locker on provided studs and install them into coupling nuts.
6. Install strut back into vehicle with 3 supplied spin lock nuts, leave them hand tight until lower strut bolts are installed.



SECTION 2: Installation

1. Select number of shims to be installed in place on top of strut mount. See "Lift Option Height Chart".
2. Reinstall strut with selected shims installed on top. Prying down on the sway bar is required in the same procedure as **SECTION 1 Step 13**. Hand tighten three new supplied short flanged nuts onto exposed threads on top strut mount.

NOTICE: Repeat procedure 1-2 on both sides of the vehicle before continuing.

3. Pry down on sway bar with pry bar which will lower the control arm allowing for installation of the factory lower 15mm bolts.
NOTICE: Use EXTREME Caution during the step above, closely monitor ABS wire and CV Axel clearances to prevent damage.
4. Using a 21mm wrench, loosen upper control arm bolts, this will aid in reconnecting the upper ball joint. Pull down on the upper control arm until it contacts the bump stop on the frame. Then tighten upper control arm to 70lbs/ft.
5. Pry downward on the upper control arm realigning the upper ball joint with the knuckle. Thread on upper ball joint nut. See **(FIG 2-2)**

NOTICE: Prying downward on the upper A-Arm will seat taper and hold the stud from rotating as you tighten the 18mm ball joint nut. Some ball joint tapers have Allen hex to hold ball joint stud while seating the taper.

Torque to 37ft/lbs plus an additional 1/4 turn.

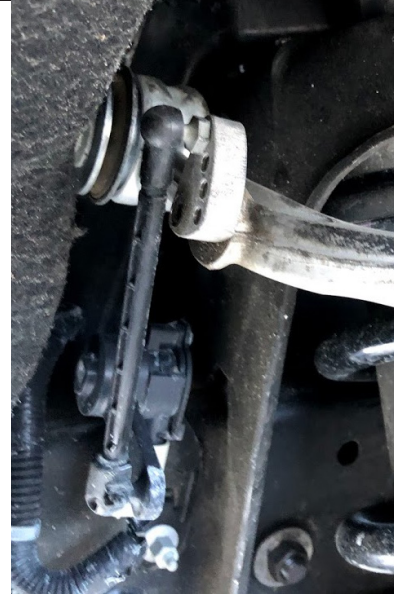
6. Reinstall ABS wire and brake lines into A-Arm and Knuckle clips.
7. Torque upper 3 strut mount nuts to **25ft/lbs.**
8. Reinstall wire loom clips.



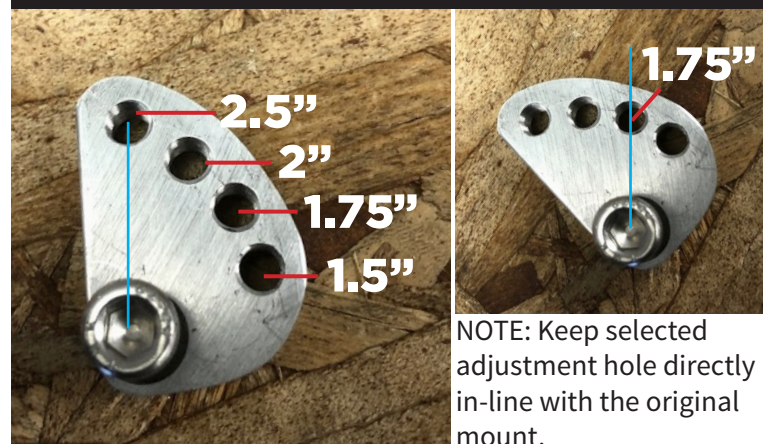
FIG. 2-2

MAGNETIC-RIDE CONTROL (Continued)

1. Bolt on adjustable relocation bracket with a 5mm Allen wrench. Reference the chart for correct positioning based on the lift of the vehicle. Relocate linkage arm into the bracket. Both linkage and bracket bolt must be kept in line vertically. Use supplied nut to fasten linkage arm.
2. Reconnect strut harness



Height Adjustment Diagram



1. Install wheels.
2. Perform wheel alignment

Again, Thank you for your purchase! Enjoy your SuspensionMAXX leveling system!

Questions? E-mail us at tech@suspensionmaxx.com or call 1.888.629.9226