



OUTLAW

S E R I E S

Installation Instructions

817818

**2018-2025 JEEP WRANGLER JL &
2020 JEEP SAHARA WITH HYBRID
E-TORQUE OPTION
3.6L ENGINE**

Does NOT fit 2-door models.

OVERVIEW:

1. Take a moment to read and understand these instructions before installing your Flowmaster performance system.

NOTE: Please inventory all parts now before continuing and if necessary, report any missing items to our tech line. This will avoid potentially stranding your vehicle until any missing replacement parts arrive.

ITM #	PART #	DESCRIPTION	QTY.
1	815425-516	Muffler	1
2	86505S	Inlet Pipe	1
3	86506S	Over-axle Pipe	1
4	86499S	Tailpipe	1
N/A	PK965	Hardware Package includes:	1
5	MC250BS	2½" Stainless Band Clamp	3
6	HW502	¾" Hanger Keeper	2

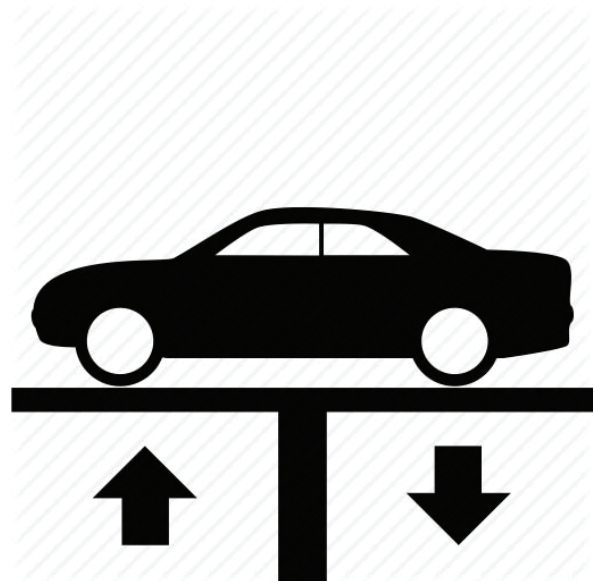
REMOVE STOCK EXHAUST SYSTEM:

2. Raise vehicle up on a hoist or rack to working height. If you don't have access to a hoist or rack, support vehicle with jack stands.

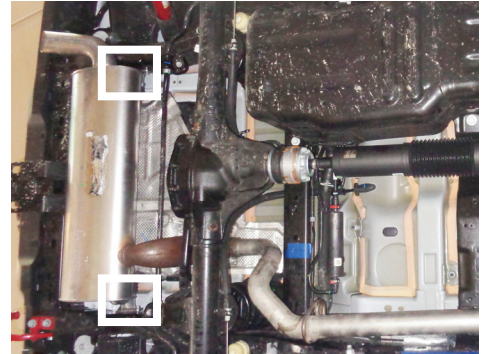
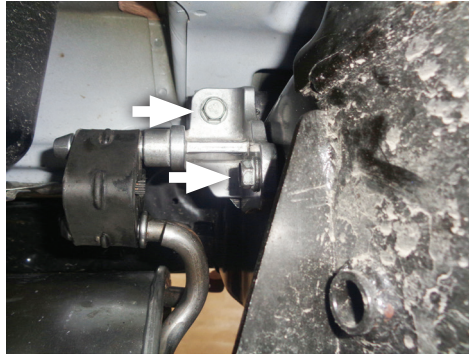
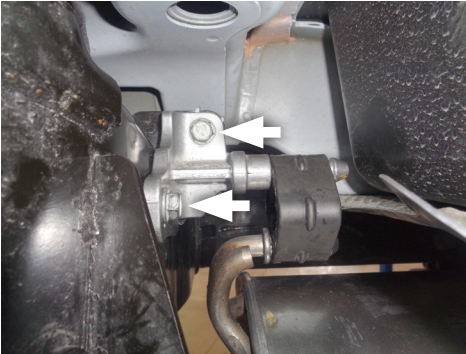
WARNING: Avoid serious burns! Allow your vehicle time to cool completely before touching any factory engine components.

To ease preparation and installation of your new kit:

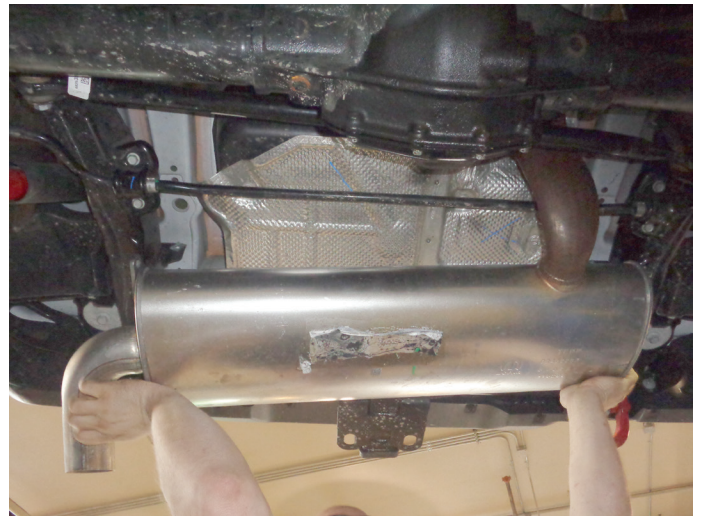
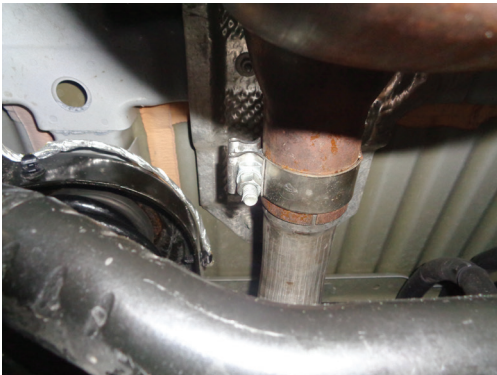
- Apply penetrating lubricant to mounts, bolts and clamps before you remove them.
- Use stands as necessary to support parts as you detach them from your vehicle and again as you install new parts.



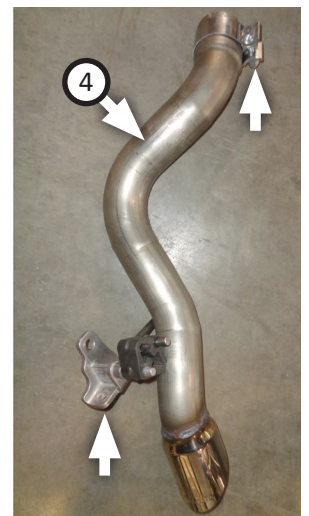
3. Remove bolts (x4) from driver and passenger side mounts above muffler.



4. Loosen clamp at muffler inlet connection above rear axle then remove muffler from vehicle.



5. Transfer driver side mount and clamp from factory muffler to **tailpipe (4)**.



6. Remove stock resonator assembly from rubber isolator with a pry bar and retain for later re-use.



7. Loosen clamp at resonator inlet and remove resonator assembly from vehicle. Retain clamp for later re-use.



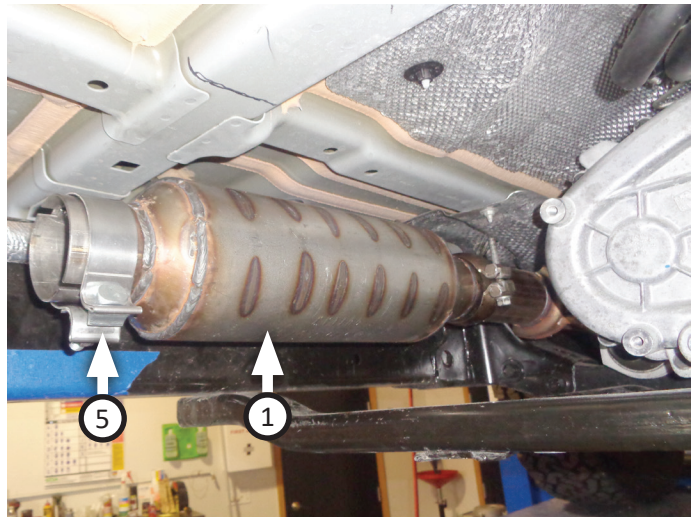
INSTALL FLOWMASTER EXHAUST SYSTEM

Remove nuts from stock and Flowmaster clamps, apply anti-seize compound to bolts and re-install nuts.

NOTE: The image in this step is intended for illustrative purposes only and may or may not accurately reflect components included in your kit.



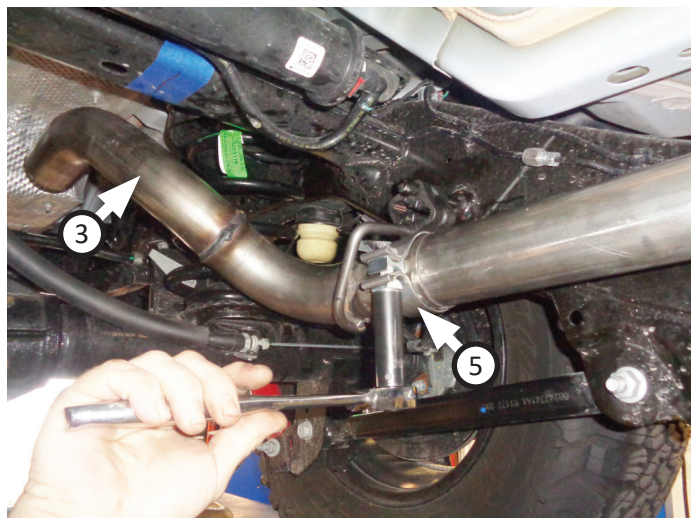
8. Place clamp (removed step 5) on ball end of factory pipe. Connect **muffler (1)** to factory pipe and tighten clamp enough to allow for later adjustment. Then place **clamp (5)** onto muffler outlet.



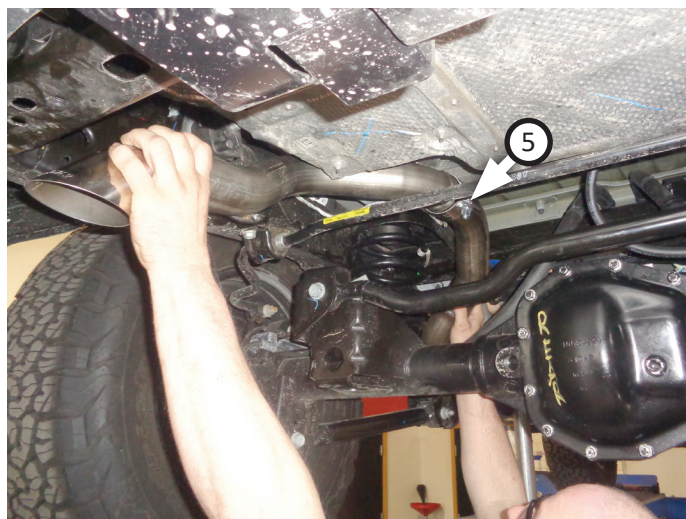
9. Place **inlet pipe (2)** into muffler, making sure bend is oriented upwards for maximum clearance. Tighten clamp just enough to allow for adjustment.



10. Place **clamp (5)** onto **over-axle pipe (3)**, route it over and into inlet pipe. Insert wire hanger into isolator on vehicle then tighten clamp just enough to allow for adjustment.



11. Place **clamp (5)** onto tailpipe, then connect it to over-axle pipe. Make sure tailpipe bend curves over suspension components, ensure connections are completely seated and tighten clamp.

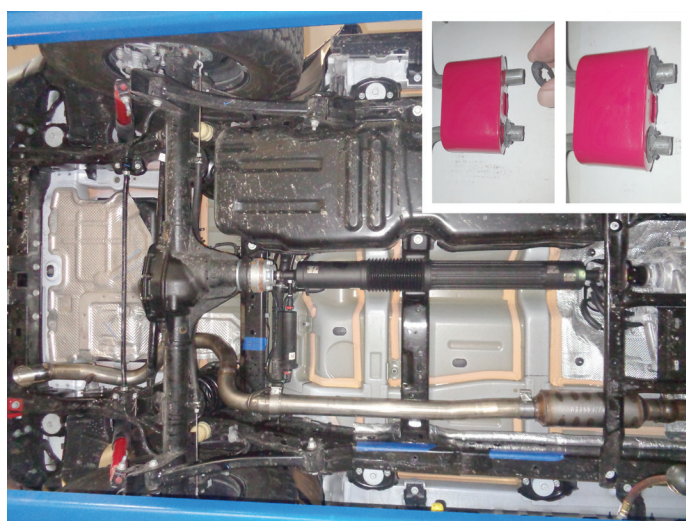


12. Place factory (driver side) mount into position, then reinstall and tighten factory bolts (x2) (removed step 3).
13. Adjust exhaust components for fit; maintaining $\frac{1}{2}$ " clearance and compensating for suspension, travel and vibration, then tighten all clamps.



14. Secure exhaust system by fitting (x2) **hanger keepers (6)** onto each wire hanger that runs perpendicular to your vehicles axle.
15. Recommended: Secure slip-fit connections with a 1-inch tack weld then spray high-temp paint over each weld to prevent rust and premature corrosion.

Congratulations, the installation of your FLOWMASTER performance exhaust system is now complete!





OUTLAW
S E R I E S

Installation Diagram

817818

**2018-2025 JEEP WRANGLER JL &
2020 JEEP SAHARA WITH HYBRID**

E-TORQUE OPTION

3.6L ENGINE

Does NOT fit 2-door models.

