



Installation Instructions

717786

2009*-21 TOYOTA TUNDRA TRUCKS
4.6L & 5.7L V8 I-FORCE ENGINE

***Built after 08/2008**

This kit does NOT fit standard cab/short bed
or double cab/long cab.

OVERVIEW:

1. Take a moment to read and understand these instructions before installing your Flowmaster performance system.

NOTE: Please inventory all parts now before continuing and if necessary, report any missing items to our tech line. This will avoid potentially stranding your vehicle until any missing replacement parts arrive.

ITM #	PART #	DESCRIPTION	QTY.
1	86461M	Right Inlet Pipe Assy	1
2	86462M	Left Inlet Pipe Assy	1
3	7425404-Z	FFX Muffler	1
4	86608M	Exit Pipe Assy	1

ITM #	PART #	DESCRIPTION	QTY.
N/A	PK925	Hardware Package includes:	1
5	353HA	Right Inlet Clamp Hanger	1
6	384HA	Left Inlet Clamp Hanger	1
7	HA602	Rear Tailpipe Frame Hanger	1
8	MC250BS	2½" Stainless Band Clamp	4
9	HW208	⅜-16 x 1 HCS Bolt	1
10	HW103	⅜-16 Z 5 Nut	1
11	HW303	⅜" Flat Washer	1
12	HW309	⅜" Lock Washer	1

REMOVE STOCK EXHAUST SYSTEM:

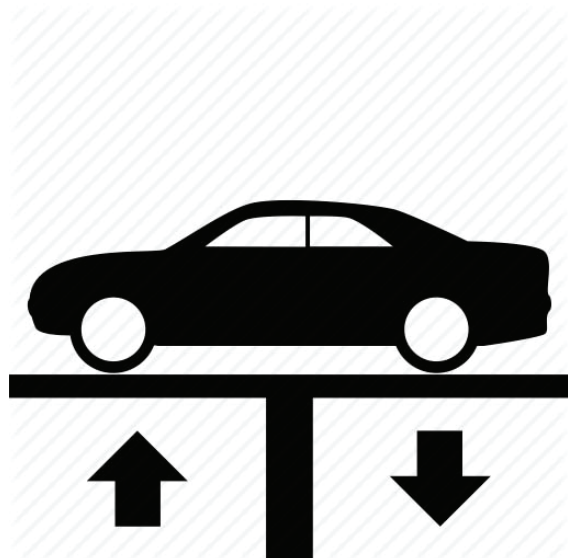
2. Raise vehicle up on a hoist or rack to working height. If you don't have access to a hoist or rack, support vehicle with jack stands.

WARNING:

Avoid serious burns! Allow your vehicle time to cool completely before touching any factory engine components.

To ease preparation and installation of your new kit:

- Apply penetrating lubricant to mounts, bolts and clamps before you remove them.
- Use stands as necessary to support parts as you detach them from your vehicle and again as you install new parts.



3. Unbolt tailpipe connection at muffler exit. Separate wire hanger on tailpipe from isolator, remove tailpipe and set it aside.



4. Unbolt bolts (x4) at both front flanged connections. Disassemble wire hangers from isolators then remove muffler assembly. Retain bolts for later use.



INSTALL FLOWMASTER EXHAUST SYSTEM

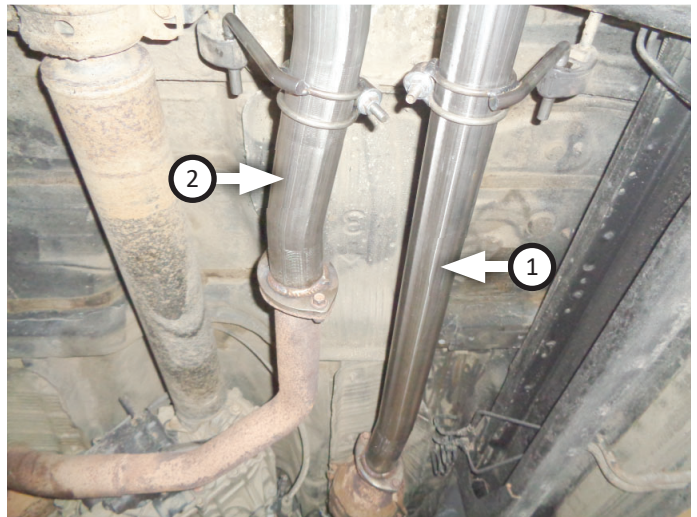
5. Remove nuts from stock and Flowmaster clamps, apply anti-seize compound to bolts and re-install nuts.

NOTE: The image in this step is intended for illustrative purposes only and may or may not accurately reflect components included in your kit.

6. Every slip fit connection in this kit must seat 3" deep except for muffler connections which must seat 2" deep. Mark all slip fit components in your kit and mark them accordingly so your Flowmaster exhaust system fits properly onto your vehicle.



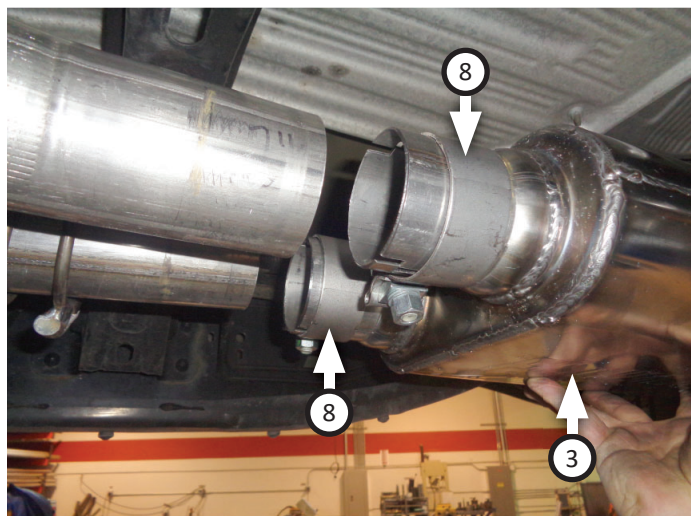
7. Connect **right (1)** and **left (2)** inlet pipe to factory outlets with bolts (removed step 4).



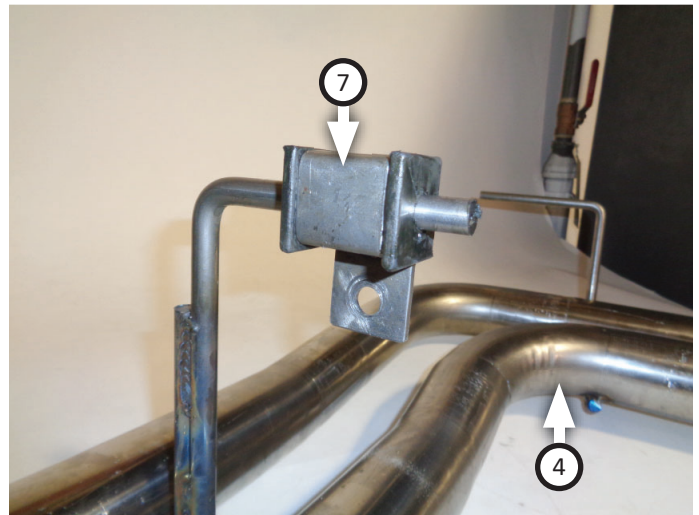
8. Place **left (6)** and **right (5)** inlet pipe clamp hangers onto inlet pipes then insert them into isolators. Tighten clamps enough to allow for later adjustment.



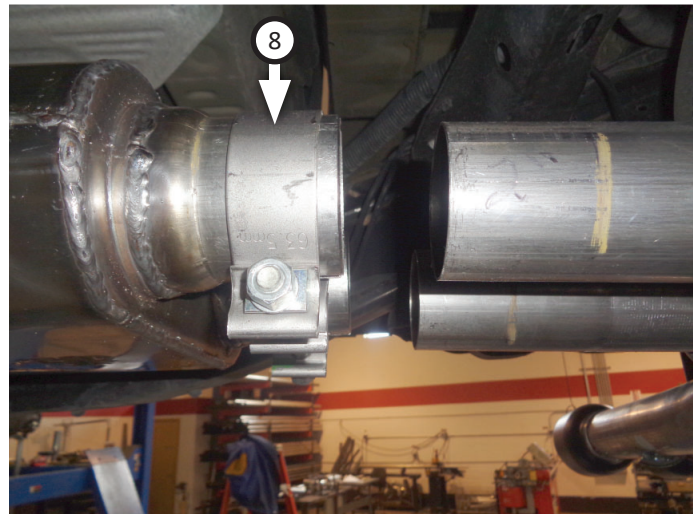
9. Place (x2) **clamps (8)** onto **muffler (3)** inlet then connect it to inlet pipes. Tighten clamps just enough to allow for adjustment.



10. Place **rear hanger (7)** onto wire hanger near tips of **exit pipe assembly (4)**.



11. Place (x2) **clamps (8)** onto muffler outlets, then connect exit pipe assembly. Insert wire hanger closest to muffler to isolator on vehicle. Tighten clamps enough to allow for adjustment.



12. Align hole in rear hanger to upper hole in front leaf spring perch. Use **bolt (9)**, **nut (10)**, **flat washer (11)** and **lock washer (12)** to mount hanger in place then tighten securely.



13. Adjust exhaust components to provide a satisfactory fit; maintaining $\frac{1}{2}$ " clearance around them while keeping in mind suspension, travel and vibration. After making any required adjustments, securely tighten all clamps.
14. We recommend applying a one inch tack weld to all slip-fit connections for a more secure installation. You may also apply high temperature paint over welded areas to prevent rust and premature corrosion.



Congratulations, the installation of your FLOWMASTER performance exhaust system is now complete!





Installation Diagram

717786

2009*-21 TOYOTA TUNDRA TRUCKS

4.6L & 5.7L V8 I-FORCE ENGINE

*Built after 08/2008

This kit does NOT fit standard cab/short bed
or double cab/long cab.

