



## Installation Instructions

# 717664

2009\*-21 TOYOTA TUNDRA

4.6L, 4.7L, 5.7L ENGINE

2/4 WD with 145" Wheelbase only

\*Built after 08/2008

### OVERVIEW:

1. Take a moment to read and understand these instructions before installing your Flowmaster performance system.

**NOTE:** Please inventory all parts now before continuing and if necessary, report any missing items to our tech line. This will avoid potentially stranding your vehicle until any missing replacement parts arrive.

ITM #	PART #	DESCRIPTION	QTY.
1	86605M	Right Inlet Pipe	1
2	86606M	Left Inlet Pipe	1
3	72468-Z	FlowFX Muffler	1
4	16542M	Left Front Tailpipe	1
5	16543M	Right Tailpipe	1
6	16544M	Left Rear Tailpipe	1
7	86607M	Side Exit Pipe	2
8	ST507B	Tips	2

ITM #	PART #	DESCRIPTION	QTY.
N/A	PK502	Hardware Pack includes:	1
9	353HA	Right Inlet Clamp Hanger	1
10	354HA	Left Rear Frame Hanger	1
11	384HA	Left Inlet Clamp Hanger	1
12	HA566	Back Up Plates	1
13	HA168	Rubber Hanger - Red	1
14	MC250BS	2½" Stainless Band Clamp	7
15	HW103	¾-16 Z 5 Nut	1
16	HW303	¾" Flat Washer	1
17	HW309	¾" Lock Washer	1
18	HW503	½" Hanger Keeper	1

### REMOVE STOCK EXHAUST SYSTEM:

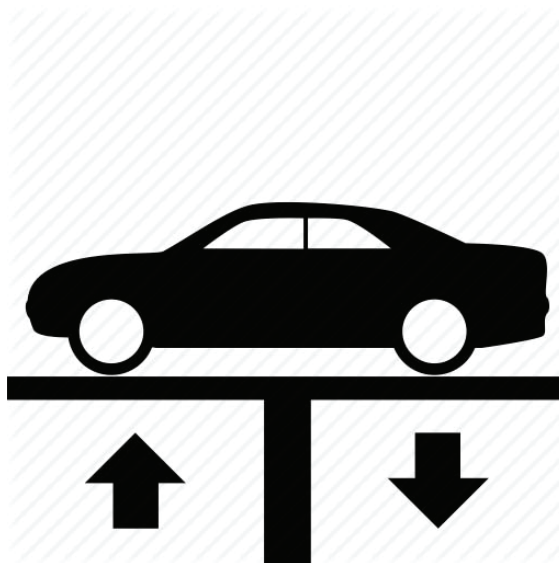
2. Raise vehicle up on a hoist or rack to working height. If you don't have access to a hoist or rack, support vehicle with jack stands.

#### WARNING:

Avoid serious burns! Allow your vehicle time to cool completely before touching any factory engine components.

#### To ease preparation and installation of your new kit:

- Apply penetrating lubricant to mounts, bolts and clamps before you remove them.
- Use stands as necessary to support parts as you detach them from your vehicle and again as you install new parts.



3. Unbolt tailpipe connection at muffler exit. Separate wire hanger on tailpipe from isolator, remove tailpipe and set it aside.



4. Unbolt bolts (x4) at both front flanged connections. Disassemble wire hangers from isolators then remove muffler assembly. Retain bolts for later use.



## INSTALL FLOWMASTER EXHAUST SYSTEM

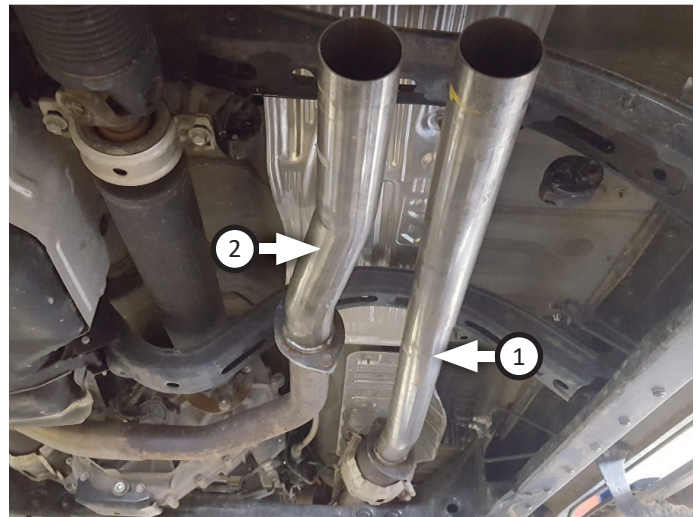
5. Remove nuts from stock and Flowmaster clamps, apply anti-seize compound to bolts and re-install nuts.

**NOTE:** The image in this step is intended for illustrative purposes only and may or may not accurately reflect components included in your kit.

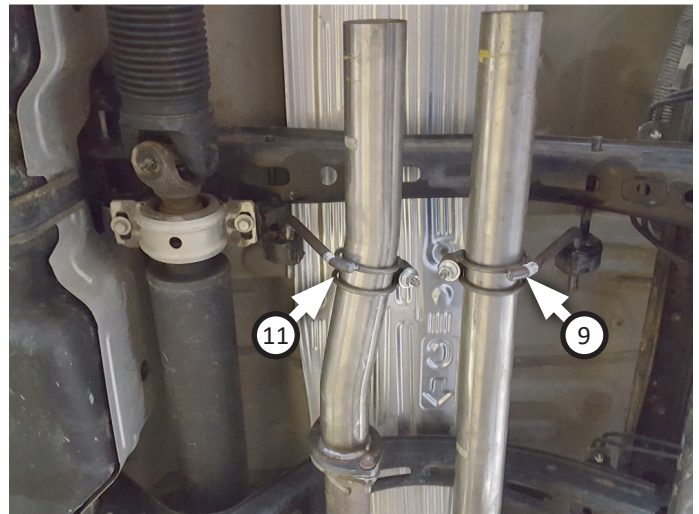
6. Every slip fit connection in this kit must seat 3" deep except for muffler connections which must seat 2" deep. Find all slip fit components in your kit and mark them accordingly so your Flowmaster exhaust system fits properly onto your vehicle.



7. Connect **right (1)** and **left (2)** inlet pipe flanges to stock front pipe flanges using bolts (x4) (removed step 4). Tighten bolts enough to allow for further adjustment.

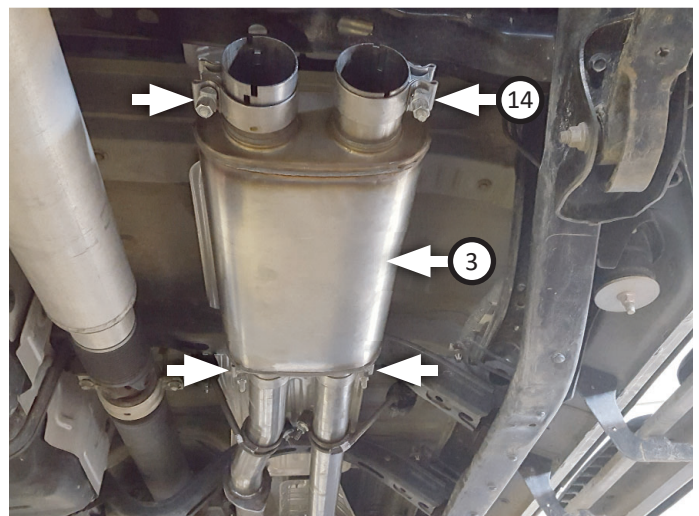


8. Slide **right (9)** and **left (11)** inlet clamp hangers onto corresponding inlet pipes and insert wire hangers into isolators on vehicle. Once in place, tighten clamps fully.



**NOTE:** If you cannot identify which muffler end connects to inlet pipes, reference drawing for proper orientation.

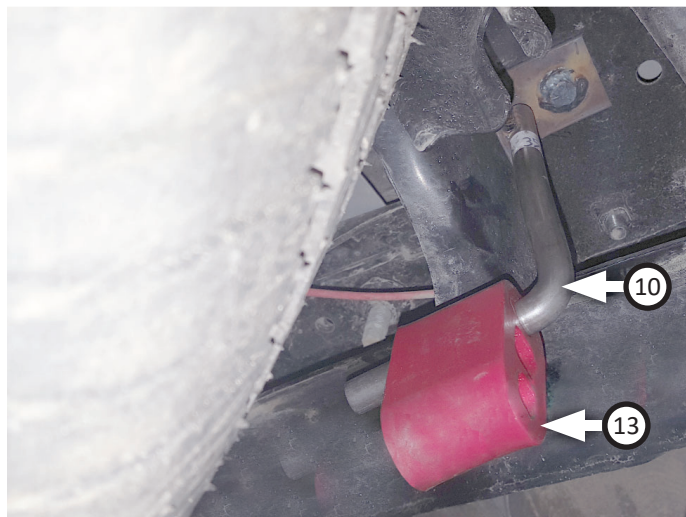
9. Place **clamps (x4) (14)** onto **muffler (3)** then connect it to inlet pipes. Level muffler and inlet pipes, adjusting inlet clamps if necessary, then tighten flange bolts and front clamps to secure all parts in position.



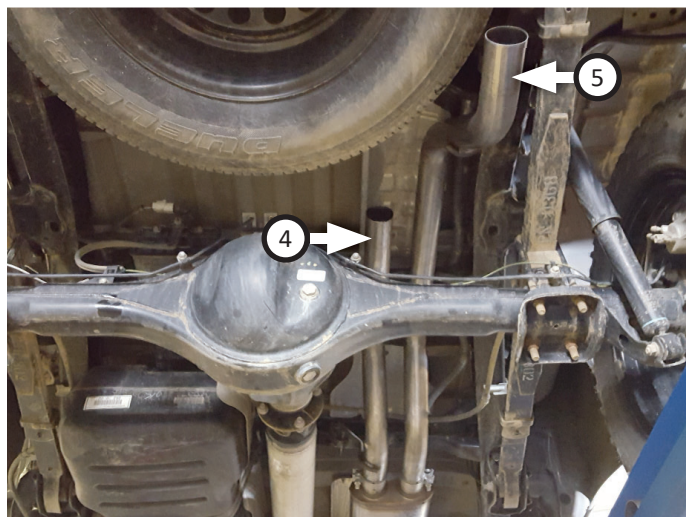


**NOTE:** Fasten left rear frame hanger to vehicle on driver side of vehicle beside spare tire.

10. Fasten **left rear frame hanger (10)** to vehicle with **backing plate (12)**, **flat washer (16)**, **lock washer (17)** and **nut (15)** as shown. Then hang **rubber hanger (13)** on frame hanger end.

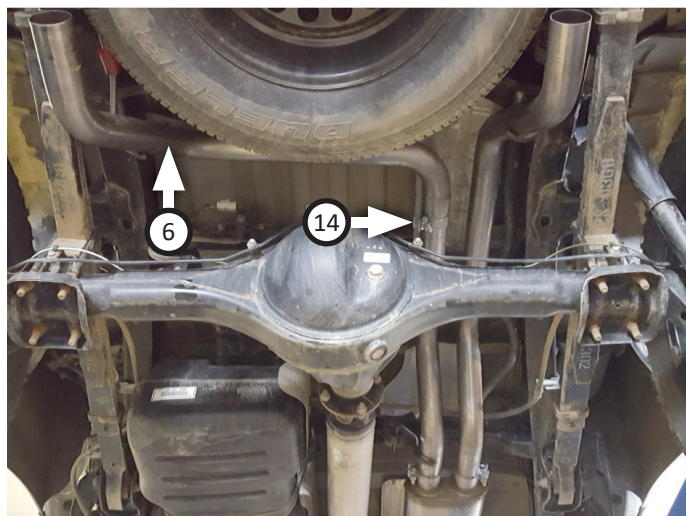


11. Route **left front (4)** and **right (5) tailpipe** over axle and connect them to muffler. Tighten clamps just enough to allow for adjustment.

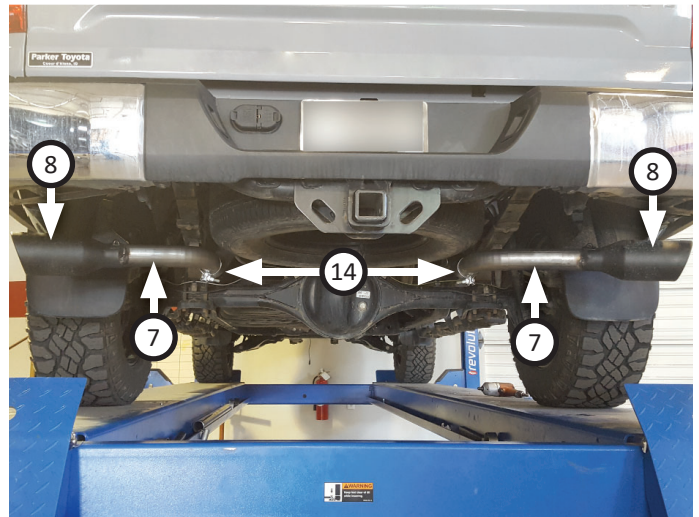


12. Place **clamp (14)** onto **left rear tailpipe (6)**, connect it to left front tailpipe and insert wire hanger into rubber hanger. Tighten clamp enough to allow for adjustment.

**NOTE:** If your left rear tailpipe doesn't install easily; try removing rubber hanger, connecting tailpipe then installing rubber hanger onto tailpipe and frame hanger.



13. Place (x2 ea.) **clamps (14)** onto **side exit pipes (7)** then connect them to tailpipes and tighten clamps just enough to allow for later adjustment.
14. Place **tips (x2) (8)** onto side exit pipes and tighten inlets. Rotate exit pipes and tips to desired distance from body or bumper, so angle cut on tips are properly positioned.



15. Adjust exhaust components for fit; maintaining  $\frac{1}{2}$ " clearance and compensating for suspension, travel and vibration then tighten all clamps. Finally, fit **hanger keeper (18)** onto sideways hanger.
16. Recommended: Secure slip-fit connections with a 1-inch tack weld then spray high-temp paint over each weld to prevent rust and premature corrosion.



Congratulations, the installation of your FLOWMASTER performance exhaust system is now complete!





## Installation Diagram

# 717664

2009\*-21 TOYOTA TUNDRA

4.6L, 4.7L, 5.7L ENGINE

2/4 WD with 145" Wheelbase only

\*Built after 08/2008

