



# DELTA FORCE

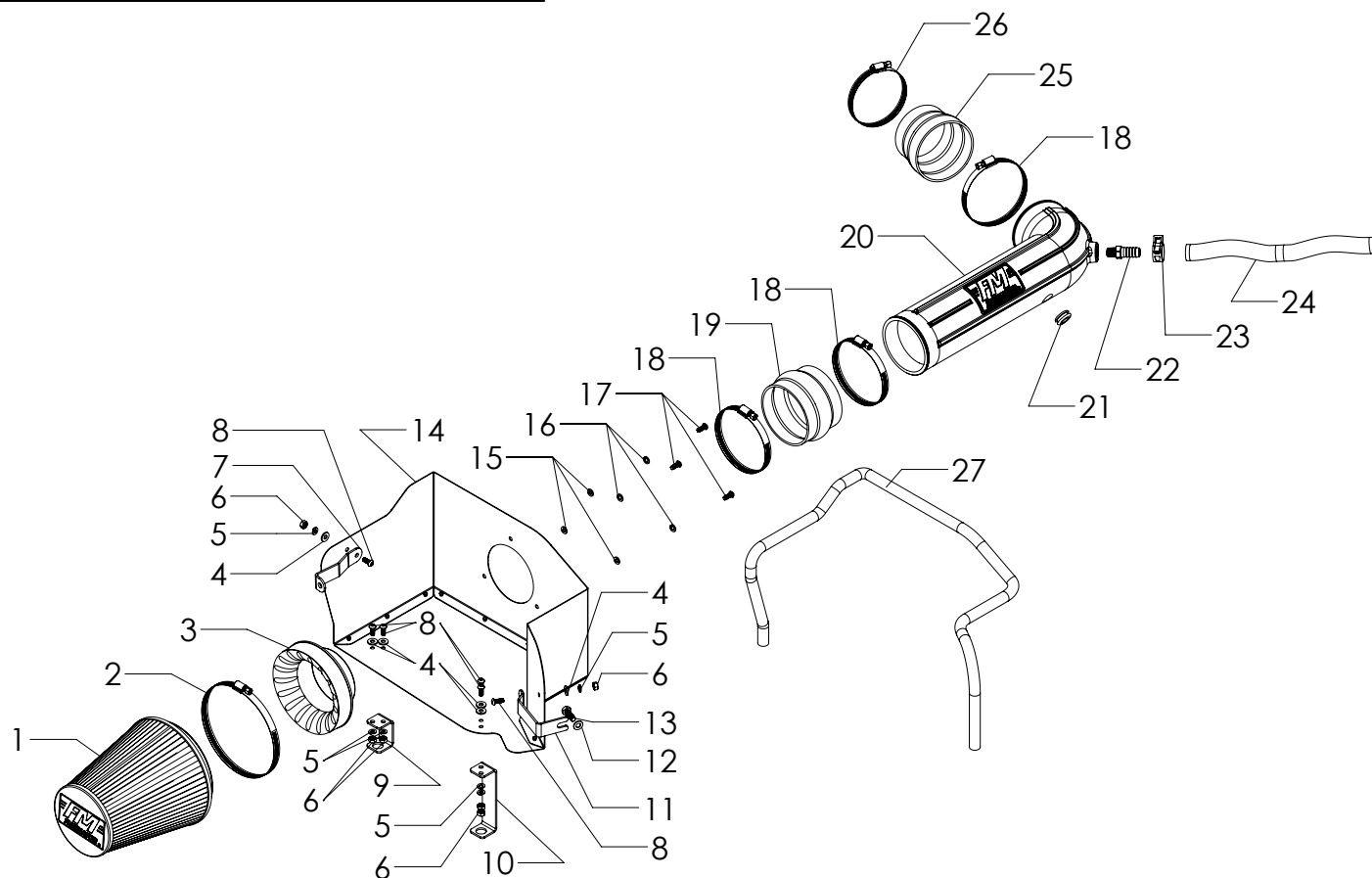
PERFORMANCE INTAKES BY FLOWMASTER

## Installation Instructions

# 615110

This kit is not engineered to fit vehicles with a body lift.

SEE CARB APPROVED SPECIFIC APPLICATION  
INFORMATION AT TOP OF PAGE 2.



ITEM NO.	PART NUMBER	DESCRIPTION	QTY.
1	AF1001	AIR FILTER, 8-5/8" × 6" DIA	1
2		SCREW CLAMP, #104 (4-1/8" - 7")	1
3	AF6002	ADAPTER, AIR FILTER 4" × 6"	1
4	HW320	FLAT WASHER, 1/4"	6
5	HW322	LOCK WASHER, 1/4"	6
6	HW115	NUT, 1/4"-20	6
7	AF5074	BRACKET 3	1
8	HW245	SCREW, 1/4"-20 × 5/8"	6
9	AF5072	BRACKET 1	1
10	AF5073	BRACKET 2	1
11	AF5075	BRACKET 4	1
12	HW324	FLAT WASHER, M8	1
13	HW264	SCREW, M8 × 1.25 × 25MM	1
14	AF3057	HEAT SHIELD	1

ITEM NO.	PART NUMBER	DESCRIPTION	QTY.
15	HW319	FLAT WASHER, M6	3
16	HW318	LOCK WASHER, M6	3
17	HW244	SCREW, M6 × 1.0 × 16MM	3
18	MC400H	SCREW CLAMP, #64 (3-9/16" - 4-1/2")	3
19	AF4005	COUPLER, FLEX 4" I.D. × 3" L	1
20	AF2057	INTAKE TUBE	1
21	AF4008	GROMMET, 1-1/16" OD × 1/2" ID × 3/16" THK	1
22	AF4032	FITTING, STRAIGHT 5/8" BARB TO 1/4" NPT MALE	1
23	MC005P	PINCH CLAMP, 3/4" HOSE	1
24	49000068	HOSE, 5/8" I.D.	18"
25	AF4062	COUPLER, REDUCING 4" - 3-1/2" I.D. × 3" L	1
26	MC350H	SCREW CLAMP, #56 (3-1/16" - 4")	1
27	49000061	GASKET, HEAT SHIELD	54"
28	LB698-15	CARB EO LABEL (D-698-15)	1

## REVIEW THE INSTRUCTIONS AND VERIFY THE KIT CONTENTS:



### 2003-08 RAM 1500, 5.7L ENGINE

This product has been granted CARB EO D-698-15 for the above applications.



### 2003-08 RAM 2500/3500, 5.7L ENGINE

The above applications are legal under the provisions of EPA's Tampering Policy dated November 23rd, 2020. The company has reasonable basis (test results) to verify that this product allows the vehicle to operate within legal emissions standards and is therefore legal to be sold for on-street use in all states that accept the legal provisions of the Clean Air Act and the EPA Tampering Policy. This product is NOT LEGAL FOR SALE OR USE IN THE STATE OF CALIFORNIA. Testing with the California Air Resources Board, in order to achieve 50-state compliance, is pending with CARB. Once testing is complete with California, and an E.O. number is issued, this product will be updated to 50-state legal status.

1. Please take a moment to read and understand these instructions before install.



2. In the unlikely event that any parts are missing, please contact Flowmaster Technical Support for replacements.

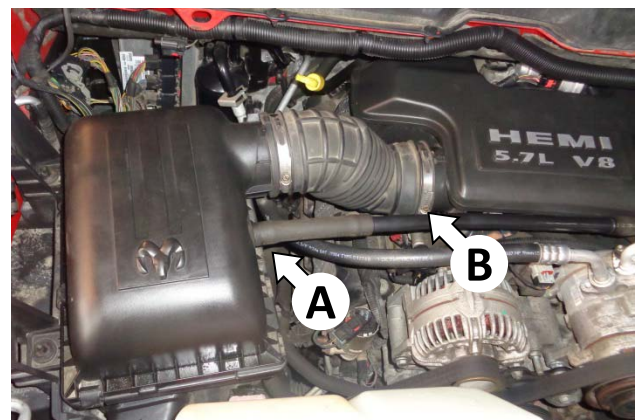
To simplify assembly and avoid cross-threading fasteners, identify and separate the 1/4-20 screws (item 22) (used with nuts (21)), and the M6 screws (used with filter adapter (3)).

## REMOVE THE FACTORY AIR INTAKE SYSTEM:

3. Turn off the vehicle's ignition.



4. Disconnect the air temperature sensor plug by depressing the locking tab and pulling it straight off the sensor.



5. Disconnect the PCV hose (A) from the airbox. Then loosen the screw clamp (B) at the resonator.



6. Separate the inlet duct from the resonator, then pull straight up on the airbox to remove it and the duct from the vehicle.





7. Loosen the two resonator bolts. (Bolts are captured / not removable.)



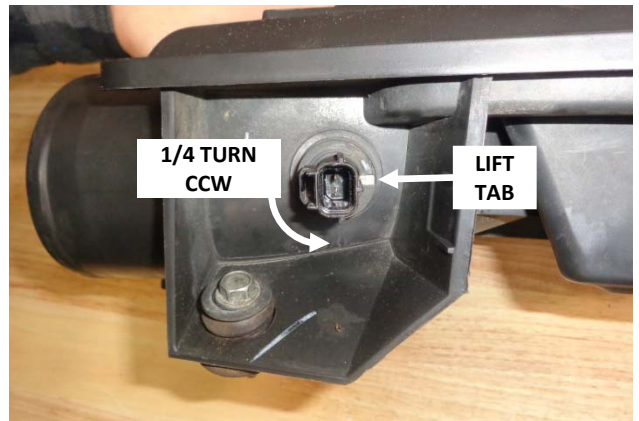
8. Remove the resonator from the vehicle.



9. Remove the rubber gasket from the throttle body.



10. Disconnect the PCV hose from the base of the oil filler neck and remove the tube from the vehicle.

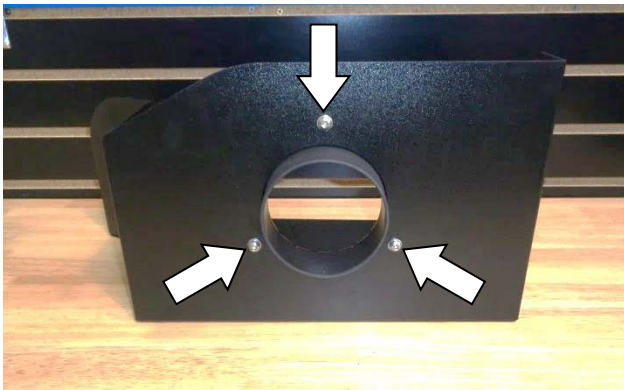


11. Remove the air temp sensor by lifting the locking tab and turning the sensor a quarter-turn counter-clockwise while pulling straight out. Then remove the o-ring from the sensor. **CAUTION: The sensor is delicate!** Handle it with care, and store it in a safe location until reinstallation.



12. Remove any two of the four rubber grommets from the bottom of the airbox, for use at **Step 18**.

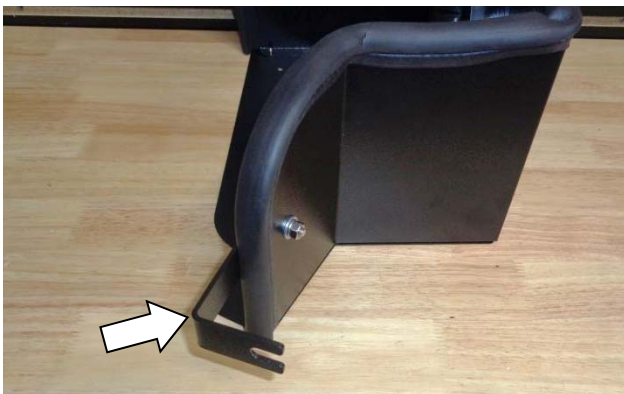
## ASSEMBLE AND INSTALL YOUR FLOWMASTER PERFORMANCE AIR INTAKE SYSTEM:



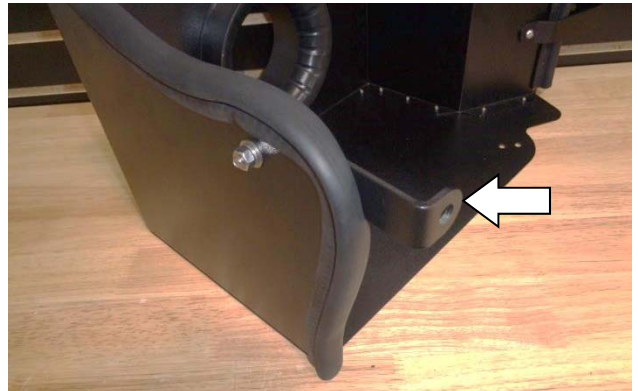
13. Assemble air filter adapter (3) to heat shield (14) using M6 screws (17), lock washers (16) and flat washers (15).



14. Attach the gasket (27) to the heat shield. Starting at one end, firmly press the gasket onto the edge, gradually working around the heat shield. When you reach the other end, trim the gasket to fit using metal-cutting shears.



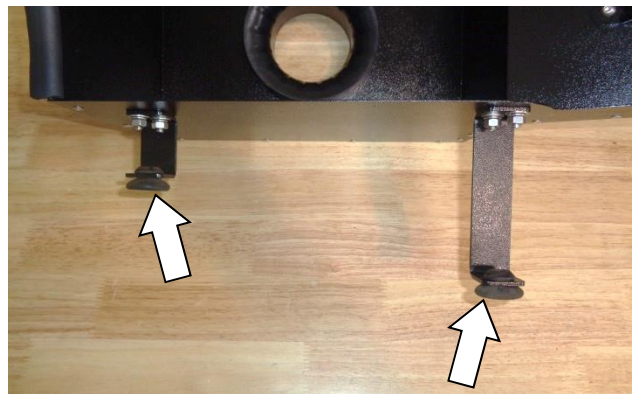
15. Attach bracket (11) to the heat shield using a ¼-20 screw (8) (on the bracket side), and flat washer (4), lock washer (5) and nut (6) (on the heat shield side). **Do not fully tighten the fasteners at this time.**



16. Attach bracket (7) to the heat shield using a ¼-20 screw (8) (on the bracket side), and flat washer (4), lock washer (5) and nut (6) (on the heat shield side). **Do not fully tighten the fasteners at this time.**



17. Attach brackets (9) and (10) to the heat shield as shown, using ¼-20 screws (8) and flat washers (4) (on the heat shield side), and lock washers (5) and nuts (6) (on the bracket side).

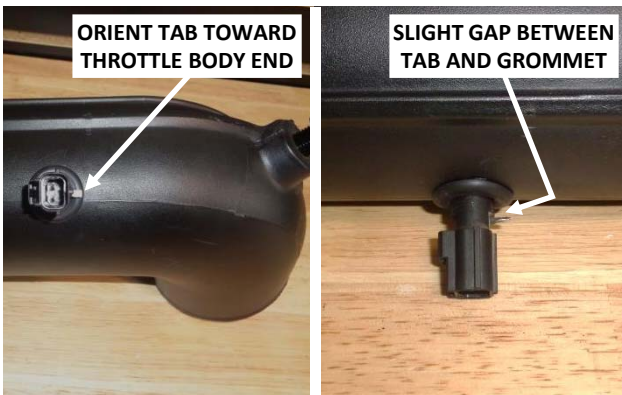


18. Push the two rubber grommets removed from the airbox at **Step 12** into the brackets as shown.





19. Apply 2 wraps of nylon thread tape to the 5/8" barbed fitting (22) and install it in the intake tube (20). Then insert the rubber grommet (21) into the tube. Moistening the grommet with soapy water will ease insertion.



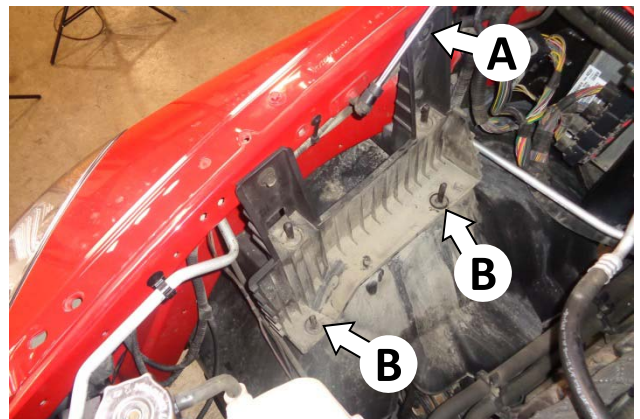
20. Carefully push the air temp sensor into the grommet, orienting the tab toward the throttle body end of the tube. Moistening the grommet I.D. with soapy water will ease insertion. **Note that the tab does not sit flush against the grommet (there will be a slight gap).**



21. Install two large screw clamps (18) on the 4" coupler (19), and install the coupler on the heat shield end of the intake tube. **Do not tighten clamps at this time.**



22. Install the other large screw clamp (18) and the small screw clamp (26) on the 4"-to-3" coupler (25). Then install the coupler on the throttle body end of the intake tube. **Do not tighten clamps at this time.**

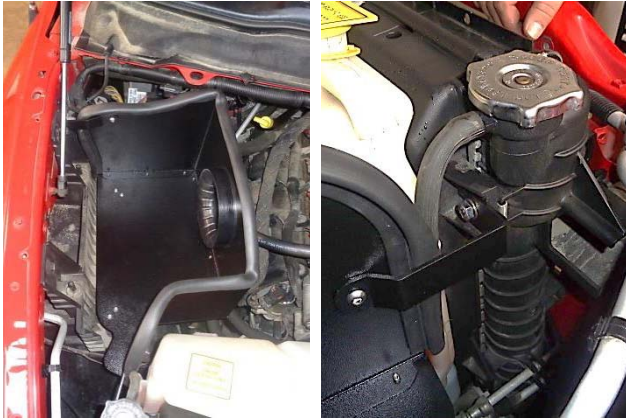


23. Remove the stock screw (A) at the rear of the airbox mount. Also note the location of the two lower airbox mount pins (B) for Step 25.



24. Remove the stock screw just below the radiator cap. Then install the M8 screw (13) with washer (12) only partially (approx. 2-3 turns) at this time.





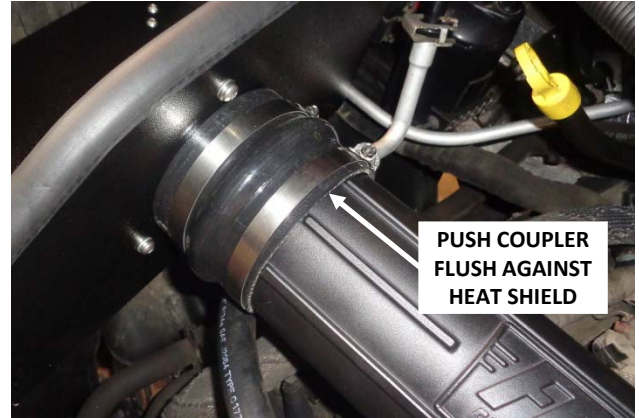
25. Install the heat shield in the vehicle by pressing the rubber grommets onto the two lower mount pins as identified at **Step 23**, while slipping the front bracket behind the screw and washer installed at **Step 24**. Then tighten the front bracket screw.



26. Fasten the rear bracket to the vehicle with the screw removed at **Step 23**. Then tighten the screws and nuts attaching the front and rear brackets to the heat shield.



27. Install the intake tube in the vehicle, but do not tighten any screw clamps yet.



28. Push the left coupler up against the heat shield and tighten only the filter adapter clamp.



29. Push the right coupler up against the throttle body and tighten only the throttle body clamp.

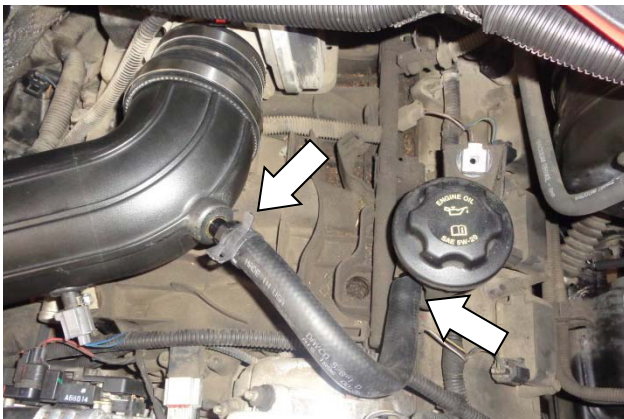


30. Center the intake tube between the couplers (so that there is roughly an equal amount of the tube inside each coupler), and tighten the two intake tube clamps.





31. Connect the air temp sensor plug to the sensor and check the plug for security.



31. Push one end of the 5/8" I.D. hose (24) onto the PCV port at the base of the oil filler neck. Cut the hose to fit the barbed fitting in the intake tube, and secure it to the fitting using the pinch clamp (23).



28. Place clamp (2) on air filter (1), install the filter on the filter adapter, and tighten the clamp.

**FLOWMASTER** CARB EO #  
THE PERFORMANCE TECHNOLOGY COMPANY™

**DELTA FORCE PERFORMANCE INTAKE**

**D-698-15**

**FLOWMASTER INC. • 866-464-6553**  
 1801 RUSSELLVILLE ROAD, BOWLING GREEN, KY 42101

29. Affix the CARB EO label (28) to a clean, readily-visible location under the hood (e.g., near the hood latch).



**Congratulations, the installation of your FLOWMASTER performance air intake kit is now complete!**

**IMPORTANT: RETAIN THESE INSTRUCTIONS FOR FUTURE REFERENCE**

**FLOWMASTER** INC.  
THE PERFORMANCE TECHNOLOGY COMPANY